

# MOVING FORWARD WITH COMMUNITY SCHOOLS

## Aligning Goals, Strategies, and Actions in Richmond



Meg Fransee, PLUS Fellow

2015

### ISSUE

In 2009 Richmond was selected as a Building Healthy Communities (BHC) site by the California Endowment, a ten-year statewide initiative. Healthy Richmond brings together community members, organizations, and local stakeholders to support positive outcome strategies, including those effecting health and equity for Richmond students.

With the 2013 introduction of the Local Control Funding Formula (LCFF), the West Contra Costa School District (WCCUSD), Healthy Richmond Hub, the City of Richmond, and other stakeholders have been strategizing around how the LCFF can benefit underserved students through the implementation of a Full Service Community School model (FSCS).

### METHODS

The following policy documents were analyzed for goal, strategy, and action alignment in 3 FSCS focal areas:

	WCCUSD	Healthy Richmond	City of Richmond
	2015-16 LCAP Draft	WCCUSD Strategic Plan	TCE 10 Outcomes
			City of Richmond General Plan
<b>Health &amp; Wellness</b>	Goal 4 & 1	Objective 18	Outcome 7-2
<b>Climate &amp; Culture</b>	Goal 4 & 2	Objective 20 & 23	Outcome 7-1
<b>Community Engagement</b>	Goal 3	Objective 13,14, 15,19,22	Outcome 7-1, 7-3, & 7-4

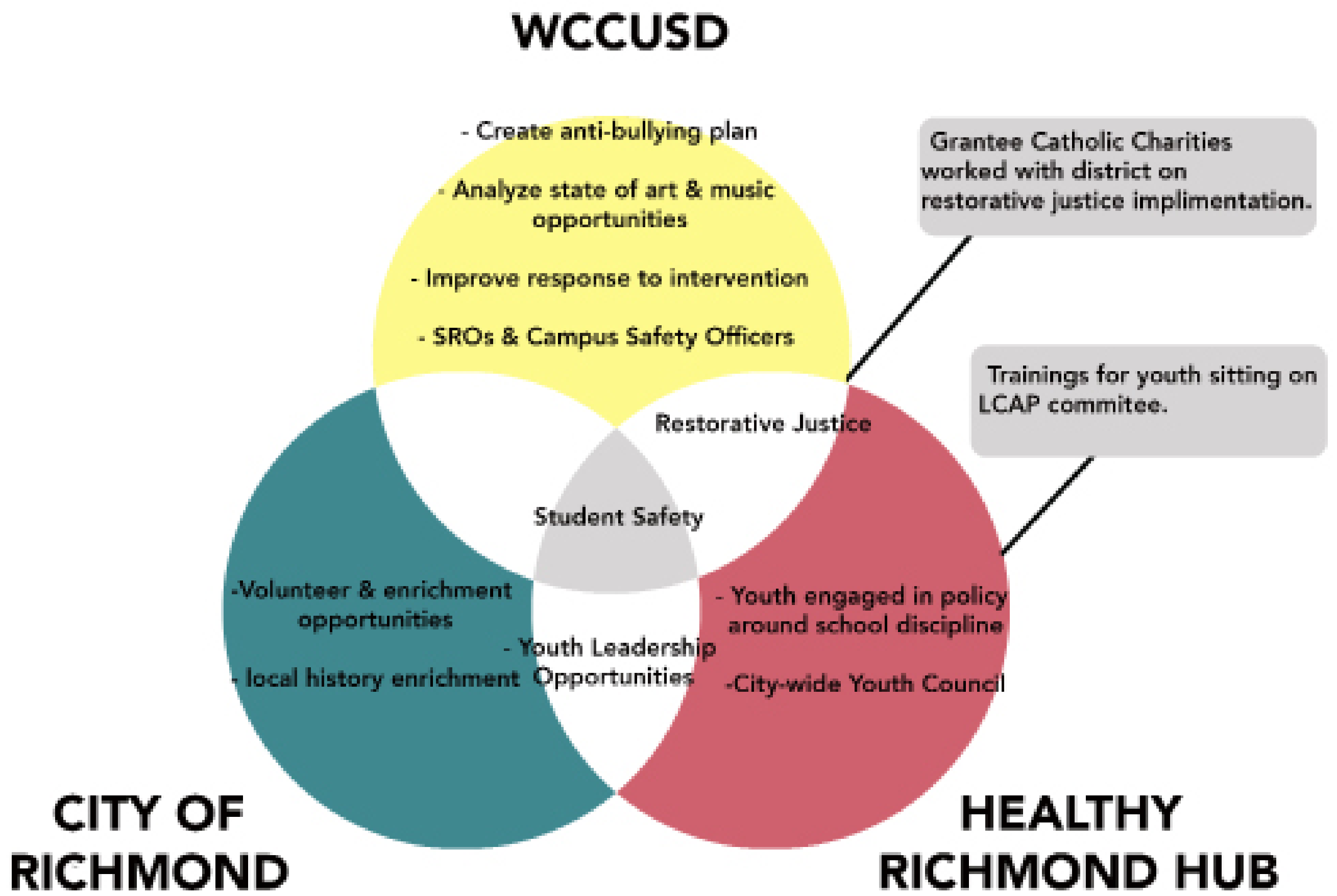
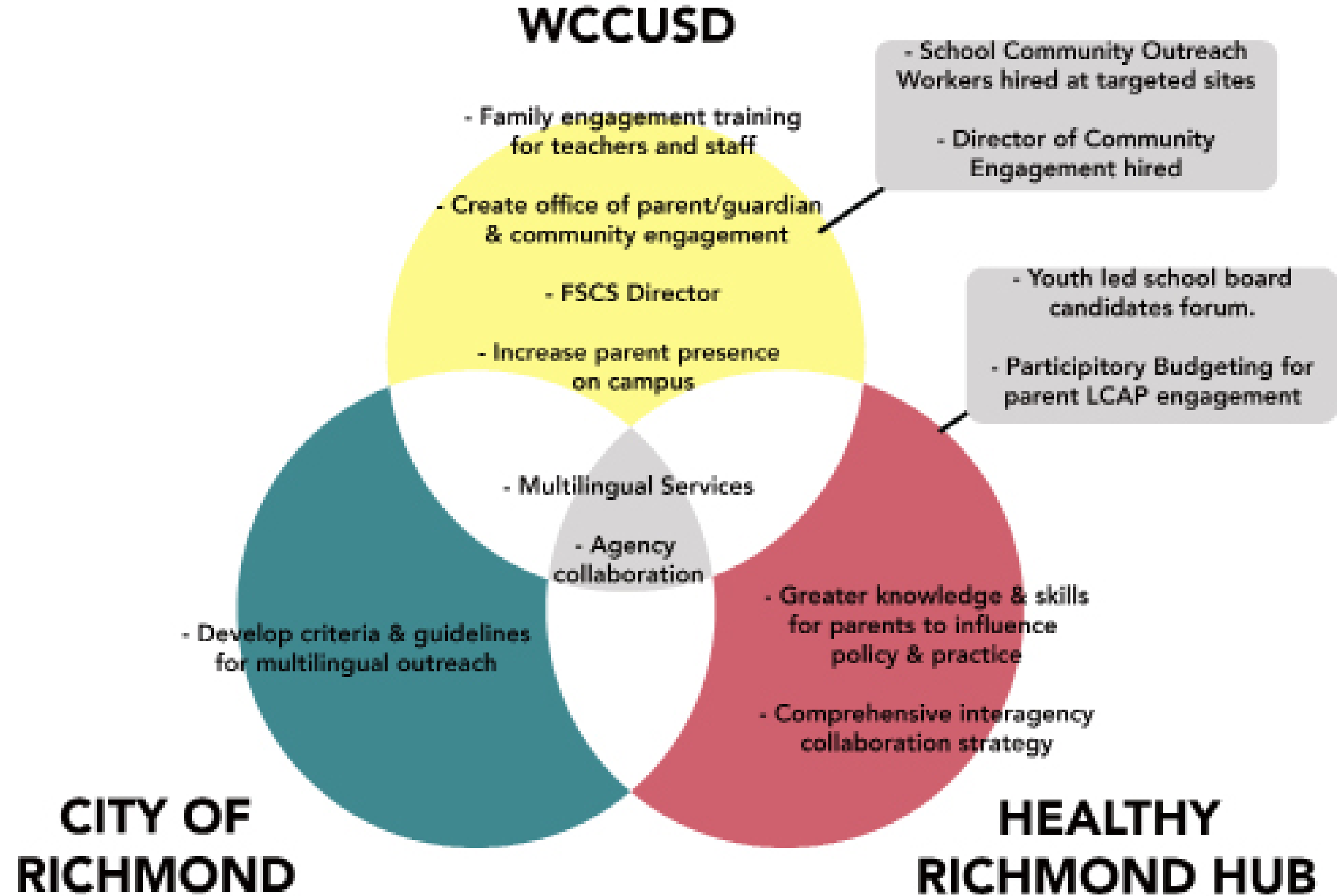
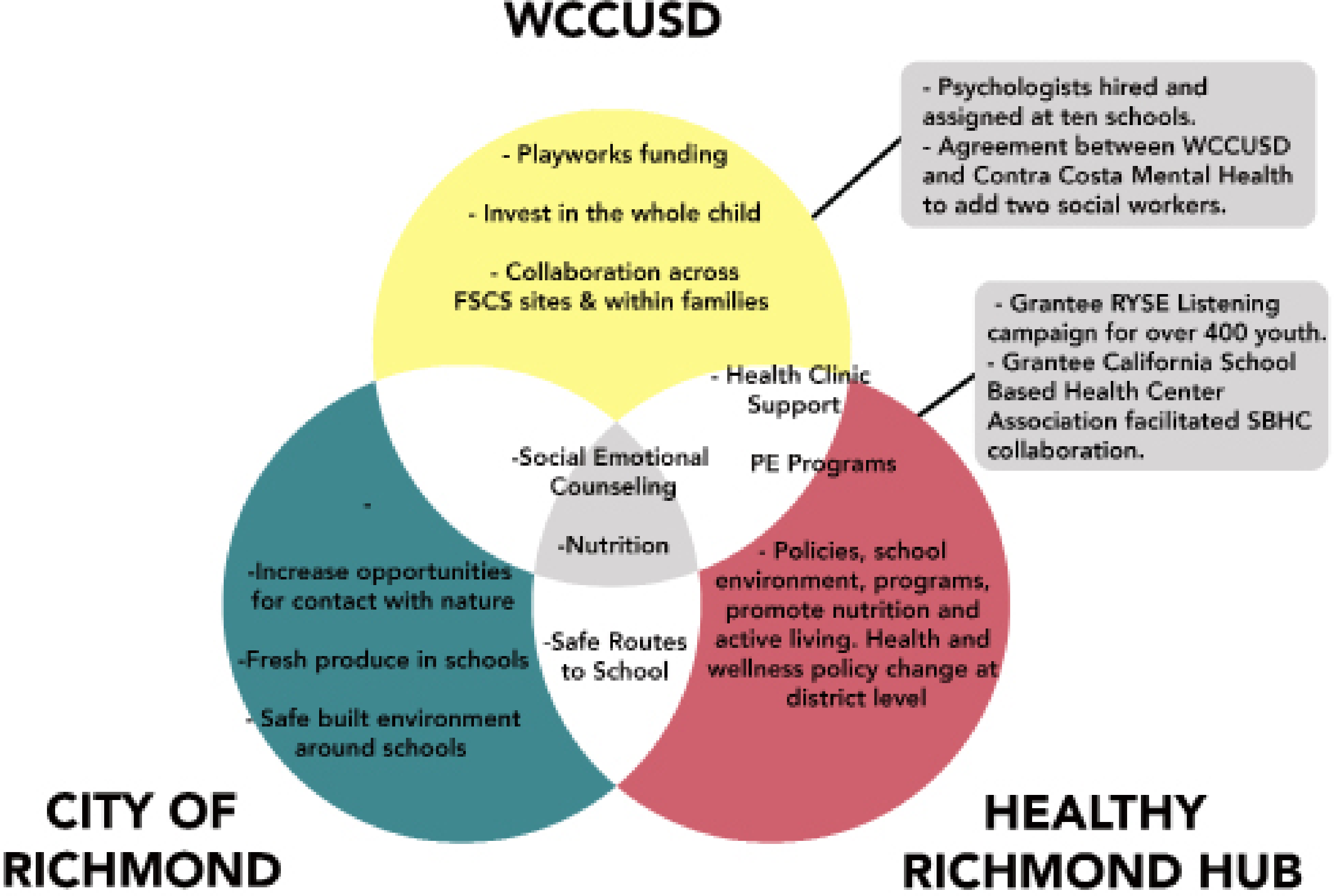
### RECOMMENDATIONS

- Expand participatory budgeting process to facilitate LCAP engagement.
- Incorporate community outreach practices into leadership advisory committee goals and strategies.
- Analyze alignment of funding streams with strategic goals for all stakeholders.
- **Collectively invest financial and staff resources to support planning, collaboration and data usage among WCCUSD, Cities of Richmond and San Pablo, Healthy Richmond, Contra Costa County and other partners.**
- **Data Support:** Investigate options for shared data platforms and analytic support from UC Berkeley or other partners.
- **Community Engagement:** Collectively attend trainings and share engagement strategies among partner agencies.

### HEALTH & WELLNESS

### COMMUNITY ENGAGEMENT

### CLIMATE & CULTURE



Included Documents: City of Richmond General Plan, WCCUSD Strategic Plan, WCCUSD 2015-16 LCAP Draft, The California Endowment Ten Outcomes