

Laying the Groundwork for Aligning the Healthy Richmond Project with West Contra Costa Unified School District Priorities & Goals



Roza Do

PLUS Leadership Initiative, UC Berkeley Center for Cities & Schools
Healthy Richmond Hub Steering Committee Meeting
May 23, 2012

Agenda

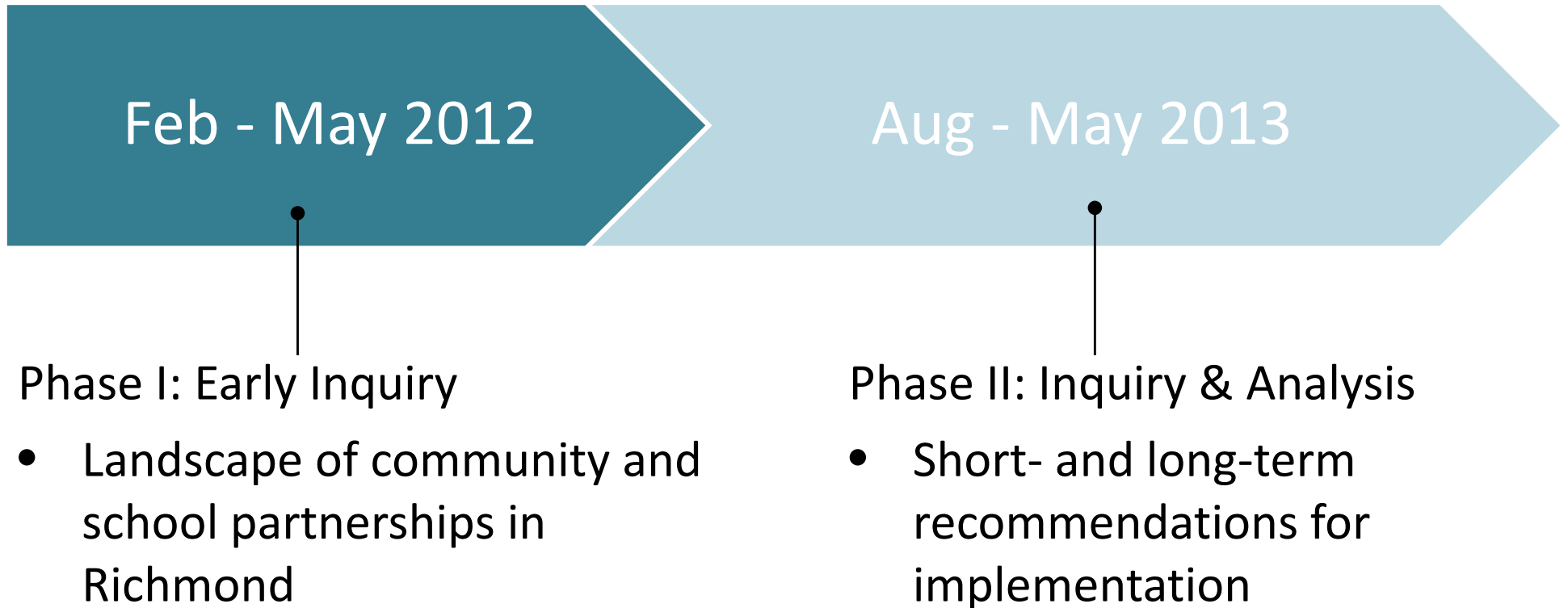
- PLUS Fellowship Project Scope
- Community Schools Overview
- Richmond Landscape
- Emerging Directions
- Exploring Next Steps

PLUS Project Scope

How can the Healthy Richmond Hub support the alignment and coordination of community and school efforts to improve outcomes and opportunities for young people?

- What are the goals of the Healthy Richmond Project and WCCUSD, and where do they align?
- What are promising models for community and school partnerships?
- What is Richmond currently doing?

PLUS Project Timeline



Healthy Richmond



*“To help our community become a place where
all children are safe, healthy, and ready to
learn”*

Healthy Richmond Priority Outcomes

The background of the slide is a collage of two photographs. The left photograph shows a group of people, including an older woman with white hair and a young girl with a colorful headband, smiling. The right photograph shows a group of children riding bicycles on a paved path. Overlaid on these photos are four circular callouts with white text on a teal background. The first callout on the left is dark teal and contains the text 'Health Home'. The second callout is a medium teal and contains the text 'Violence Free'. The third callout is a light teal and contains the text 'Healthy Community & School Env.'. The fourth callout on the right is a medium teal and contains the text 'Economic Develop.'. The images in the background are semi-transparent, allowing the text in the callouts to be clearly visible.

Health Home

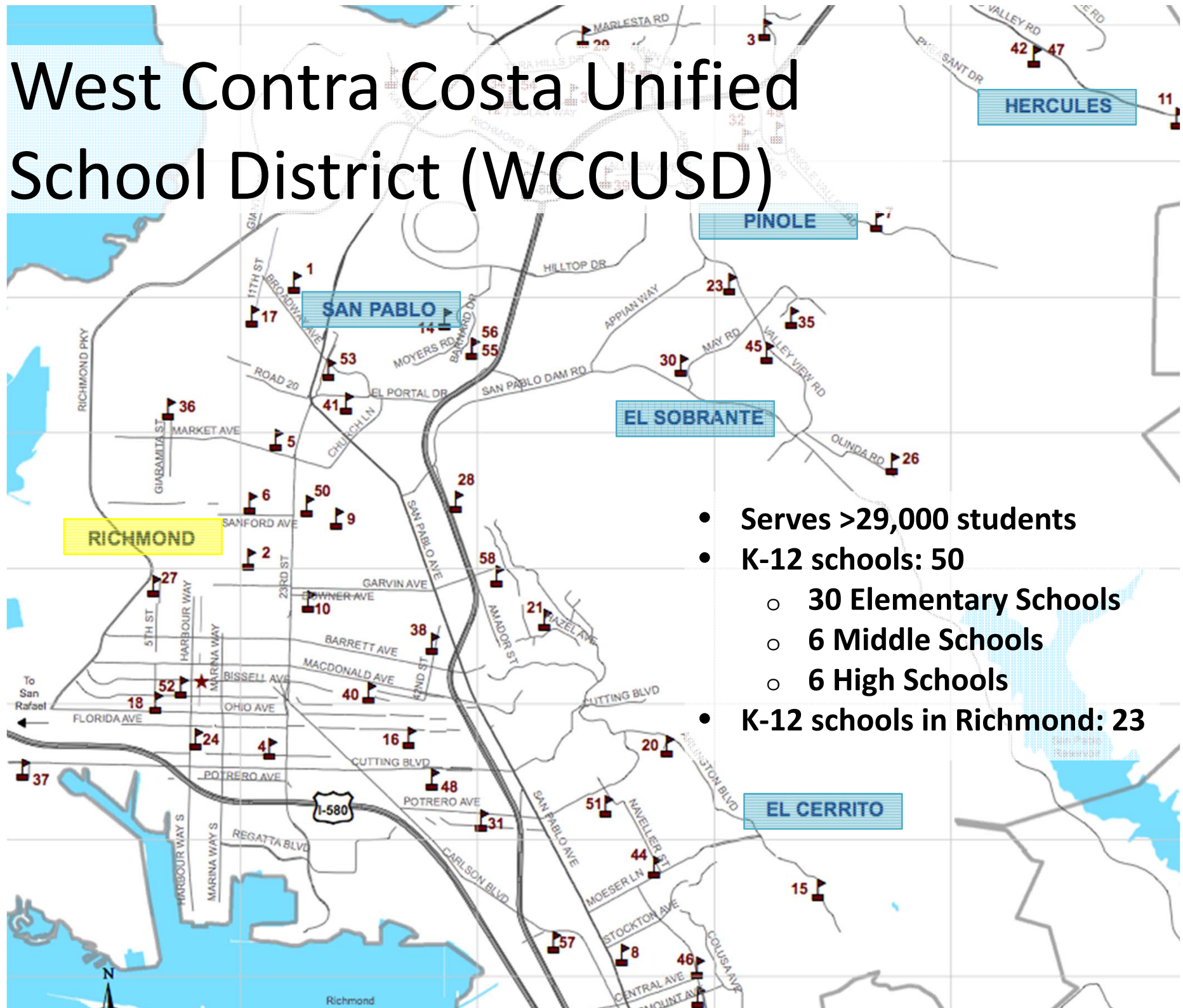
Violence Free

Healthy Community
& School Env.

Economic Develop.

Photos: Nevin Community Center Re-Opening, CCISCO; Bike Fiesta, City of Richmond Health Initiatives

West Contra Costa Unified School District (WCCUSD)



- Serves >29,000 students
- K-12 schools: 50
 - 30 Elementary Schools
 - 6 Middle Schools
 - 6 High Schools
- K-12 schools in Richmond: 23

WCCUSD Priority Goals



**Student
Achieve-
ment**

Safety

**Account-
ability**

**Community
Engage-
ment**

Source: WCCUSD Strategic Plan & 2010-11 Annual Report

Photos: Peres Elementary Garden Party, City of Richmond Health Initiatives; Building Blocks for Kids; Richmond High School, SF Gate

What is a community school?

- Place, strategy, approach, set of partnerships between the school and community resources *that are determined and defined by the community*
- Integrated focus on health, academics, social services, youth and community development
- Community centers open early, late, evenings and weekends
- Learning centers for 21st century, real world skills

What are the conditions that community schools seek to fulfill?

Challenging core curriculum

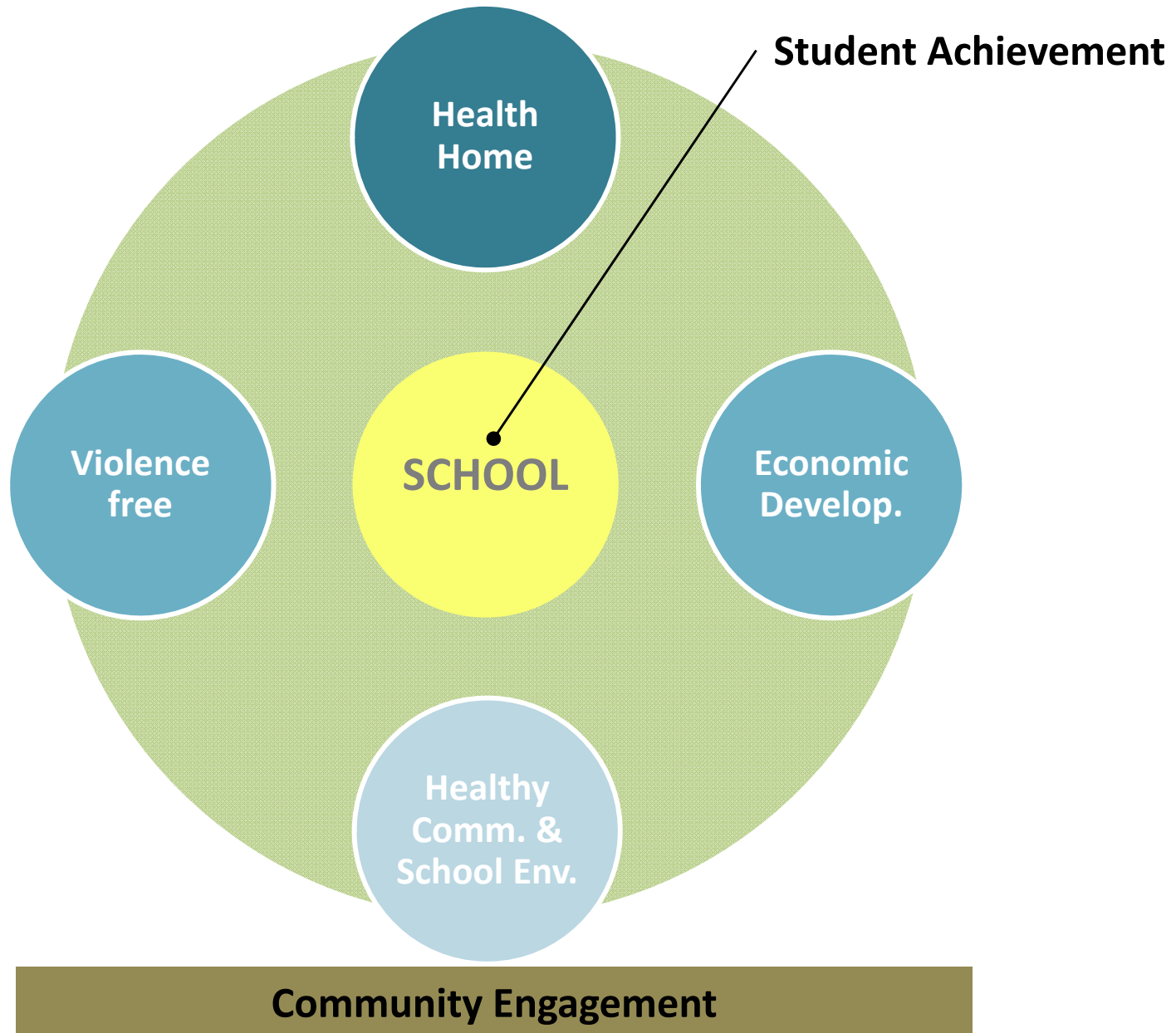
Students engaged in learning in and out of school

Basic physical, mental and emotional health needs are met

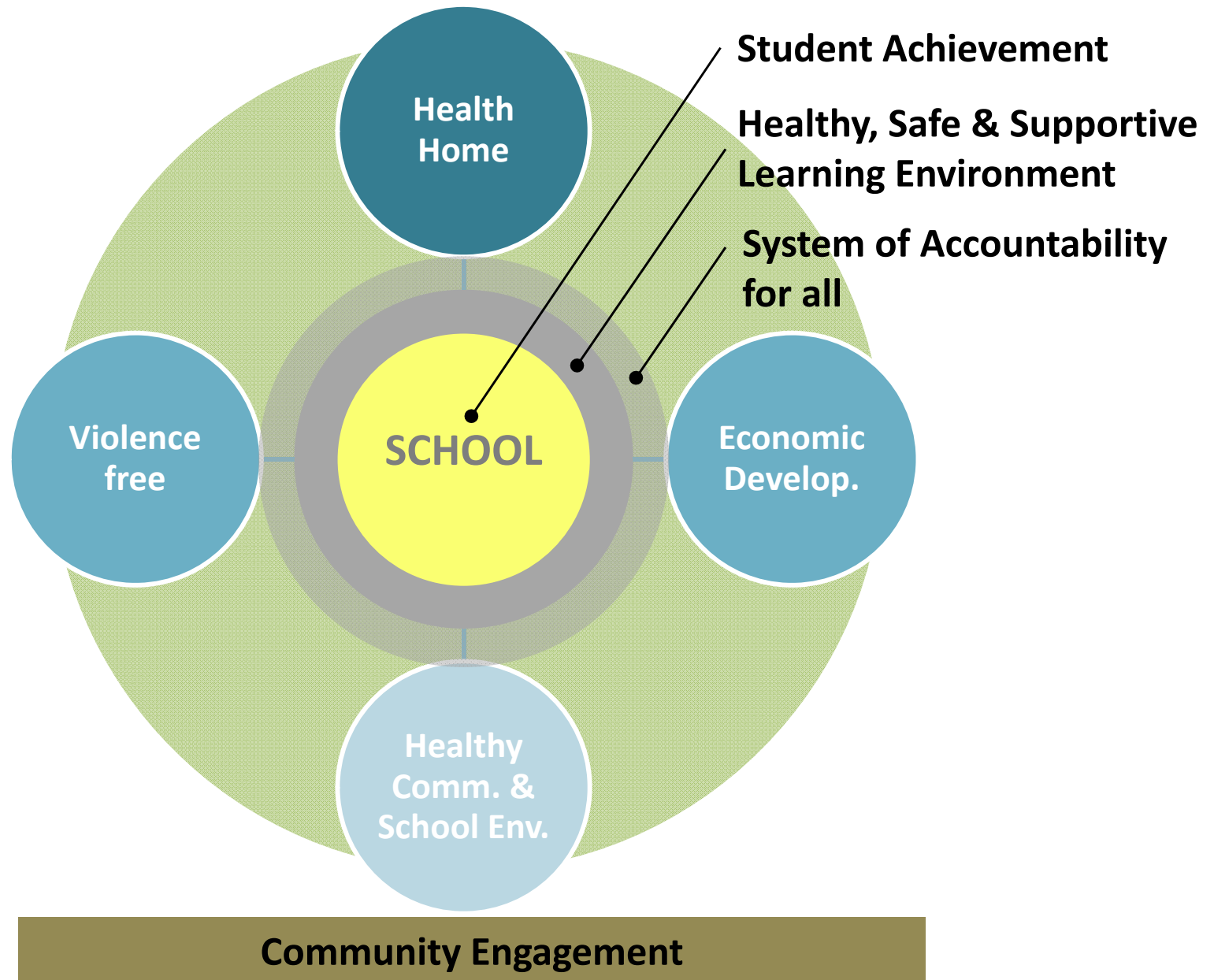
Mutual respect and effective collaboration

Community supports and connects to broader learning network

How do community schools align with Healthy Richmond?

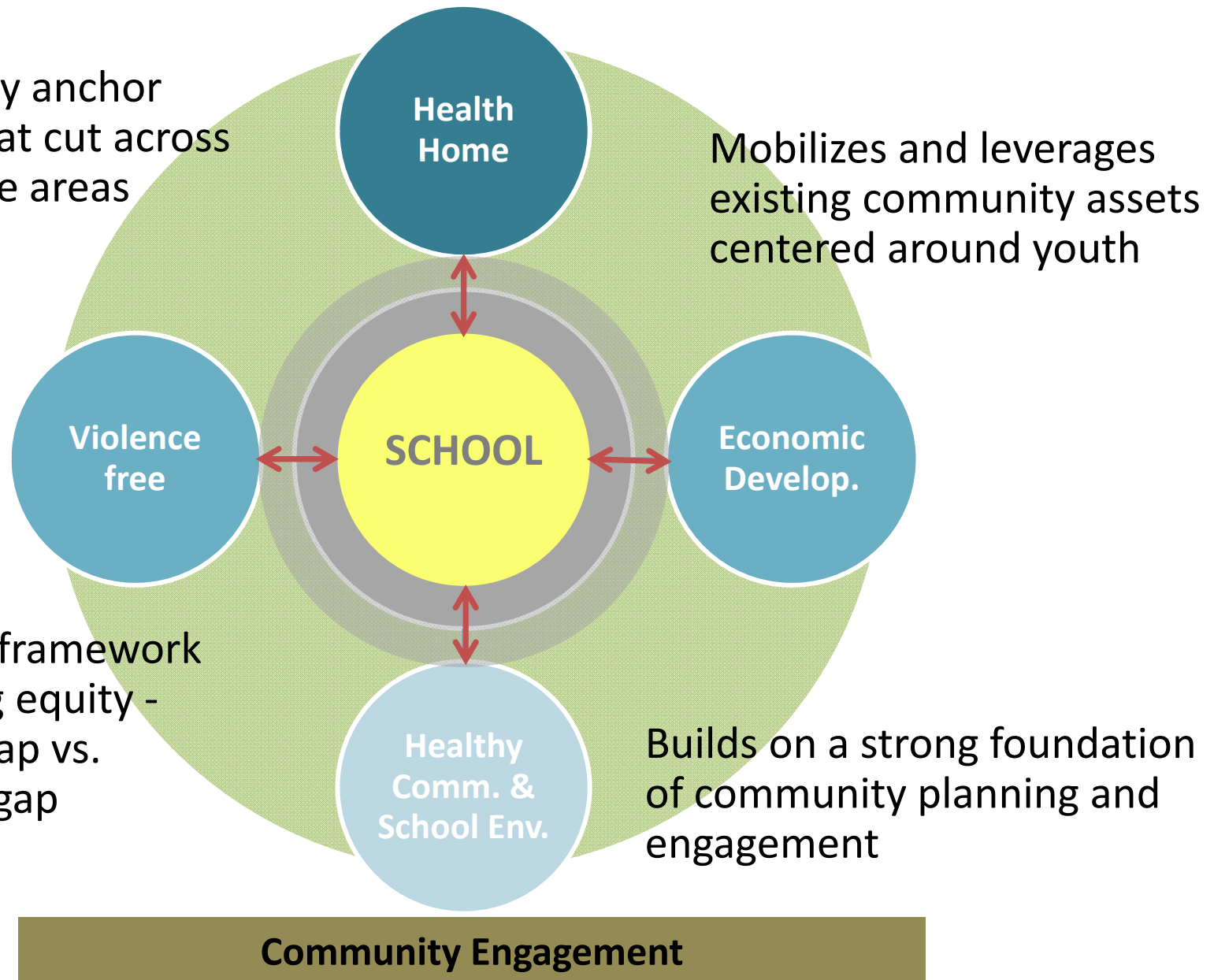


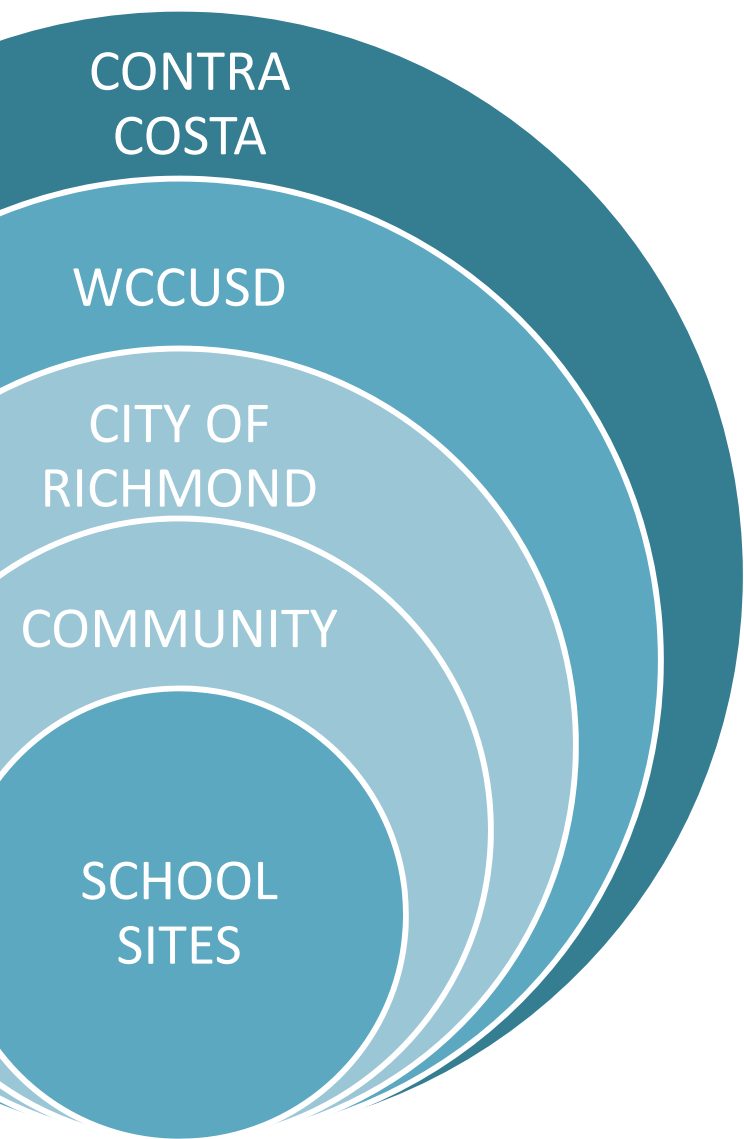
How do community schools align with Healthy Richmond?



How do community schools align with Healthy Richmond?

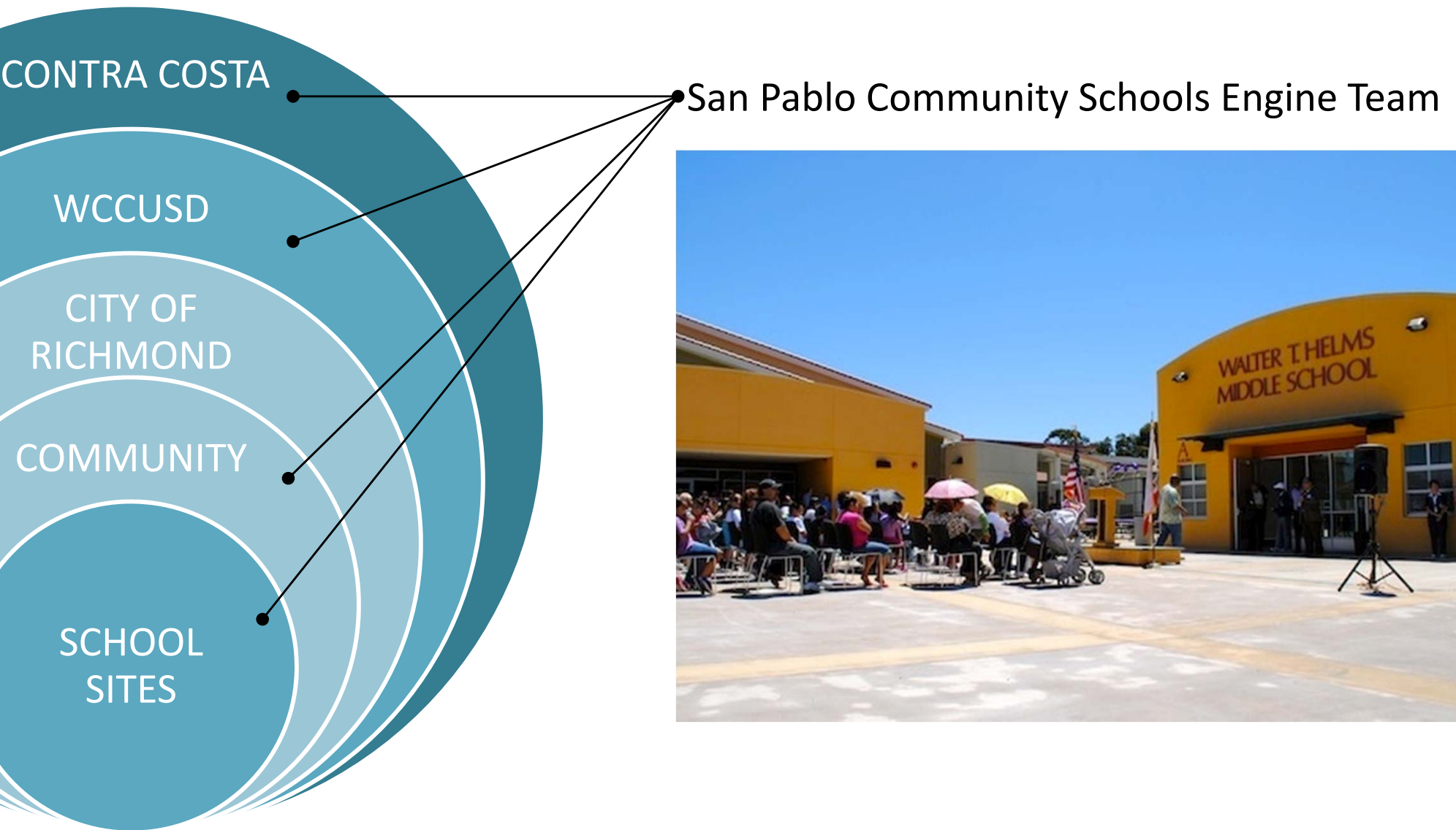
Schools are key anchor institutions that cut across all HR outcome areas



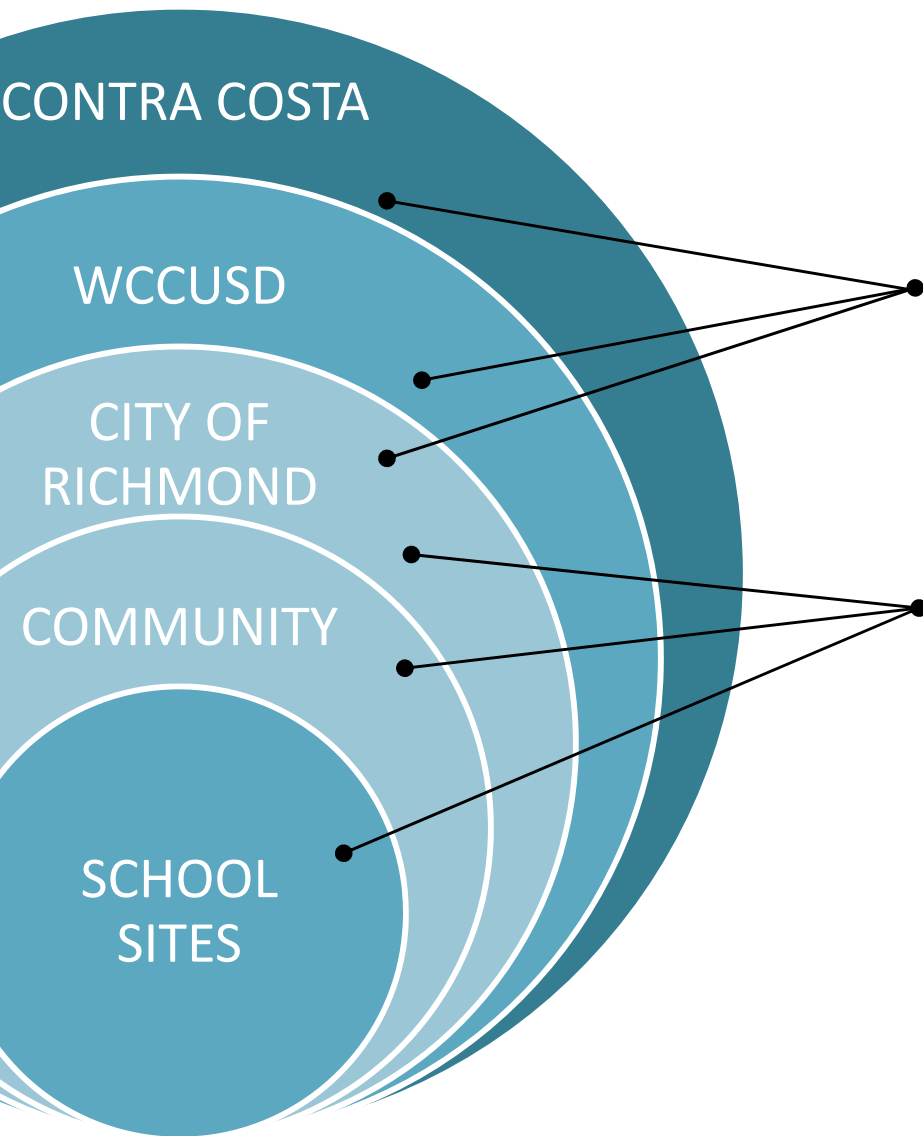


Richmond Landscape: Snapshot of Community & School Partnerships

Richmond Community & School Partnerships



Richmond Community & School Partnerships



Richmond Health Equity Partnership



Community Health & Wellness Implementation





CITY OF

Richmond CALIFORNIA

Search



Home

+ SHARE

Print

Email

Contact Us

STAY CONNECTED



GOVERNMENT

DEPARTMENTS

COMMUNITY

BUSINESS

PUBLIC SAFETY

CITY CONNECTION

Health in All Policies

Full Service Community
Schools

RHEP Meeting Documents

Richmond California
BUSINESS

COR Connect

Environment

You are here: [Home](#) > [Departments](#) > [City Manager](#) > [Health Initiatives](#) > [Richmond Health Equity Partnership \(RHEP\)](#) > [RHEP Meeting Documents](#)

RHEP Collaborative Resources

January 2012

1. [City of Richmond General Plan Community Health and Wellness Element](#)
2. [City of Richmond General Plan Education and Human Services Element](#)
3. [Health Disparities in Contra Costa](#)
4. [Health in All Policies, Health Data in all Decisions: Data, Indicators, and Tracking Strategies for Implementation of the City of Richmond's Health and Wellness Element](#)
5. [City of Richmond Final Community Health and Wellness Element Pilot Implementation Progress Report](#)
6. [Neighborhood Action Plan – Iron Triangle](#)
7. [Neighborhood Action Plan – Belding Woods](#)
8. [Measuring What Matters: Neighborhood Research for Economic and Environmental Health and Justice in Richmond, North Richmond and San Pablo](#)

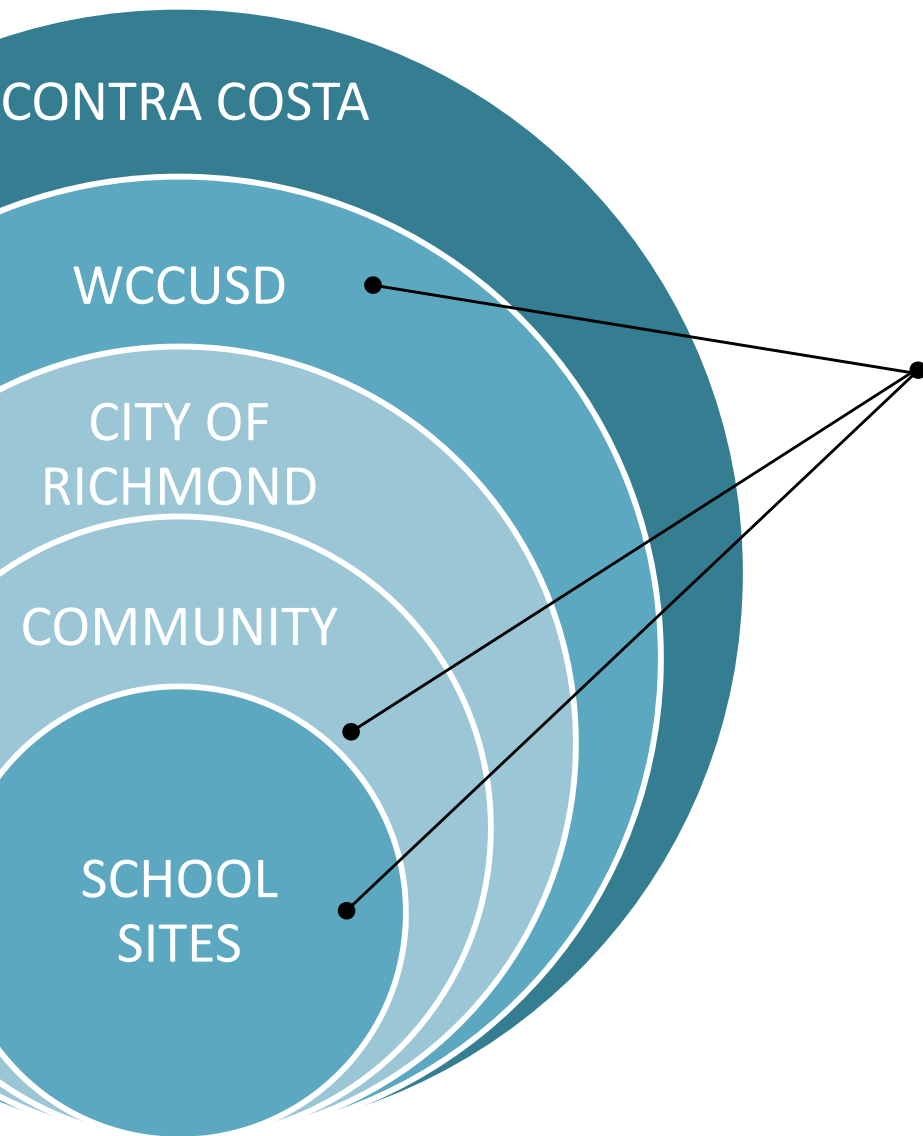
February 2012

1. [TCE Approved Work Plan](#)
2. [Healthy Richmond City Map](#)
3. [Healthy Richmond Logic Model](#)
4. [Healthy Richmond Narrative Explanation of the Logic Model](#)

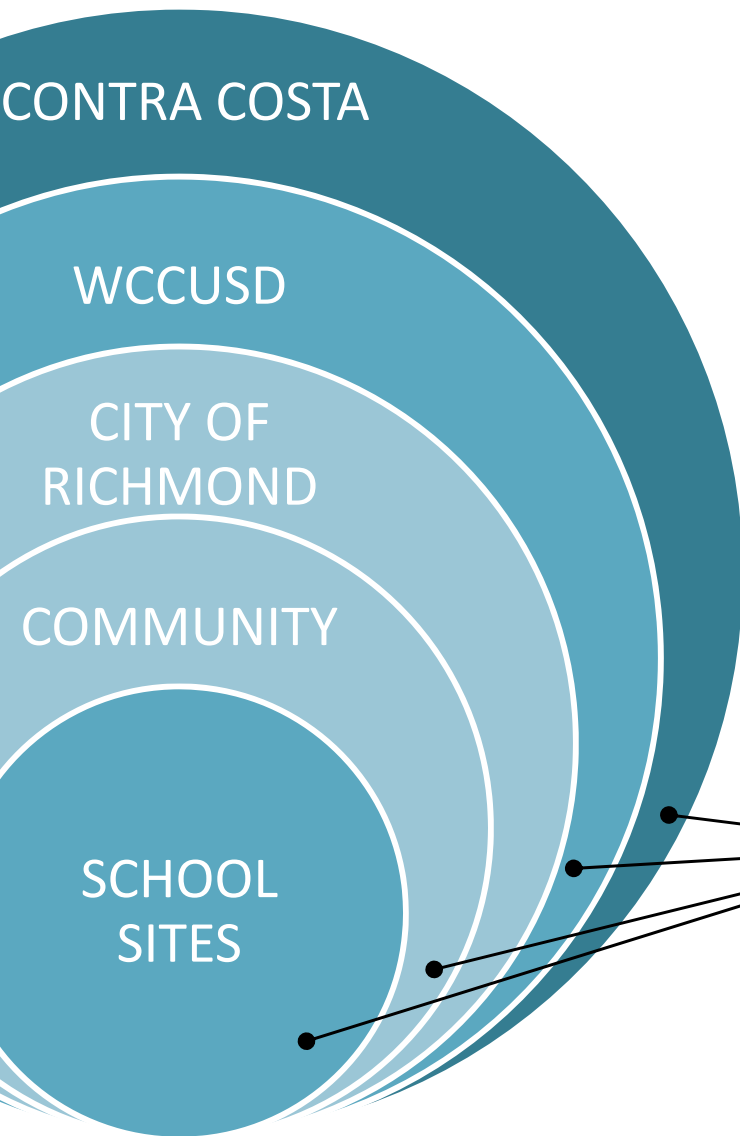
March 2012

Richmond Health Equity Partnership materials and resources available at www.richmondhealth.org

Richmond Community & School Partnerships



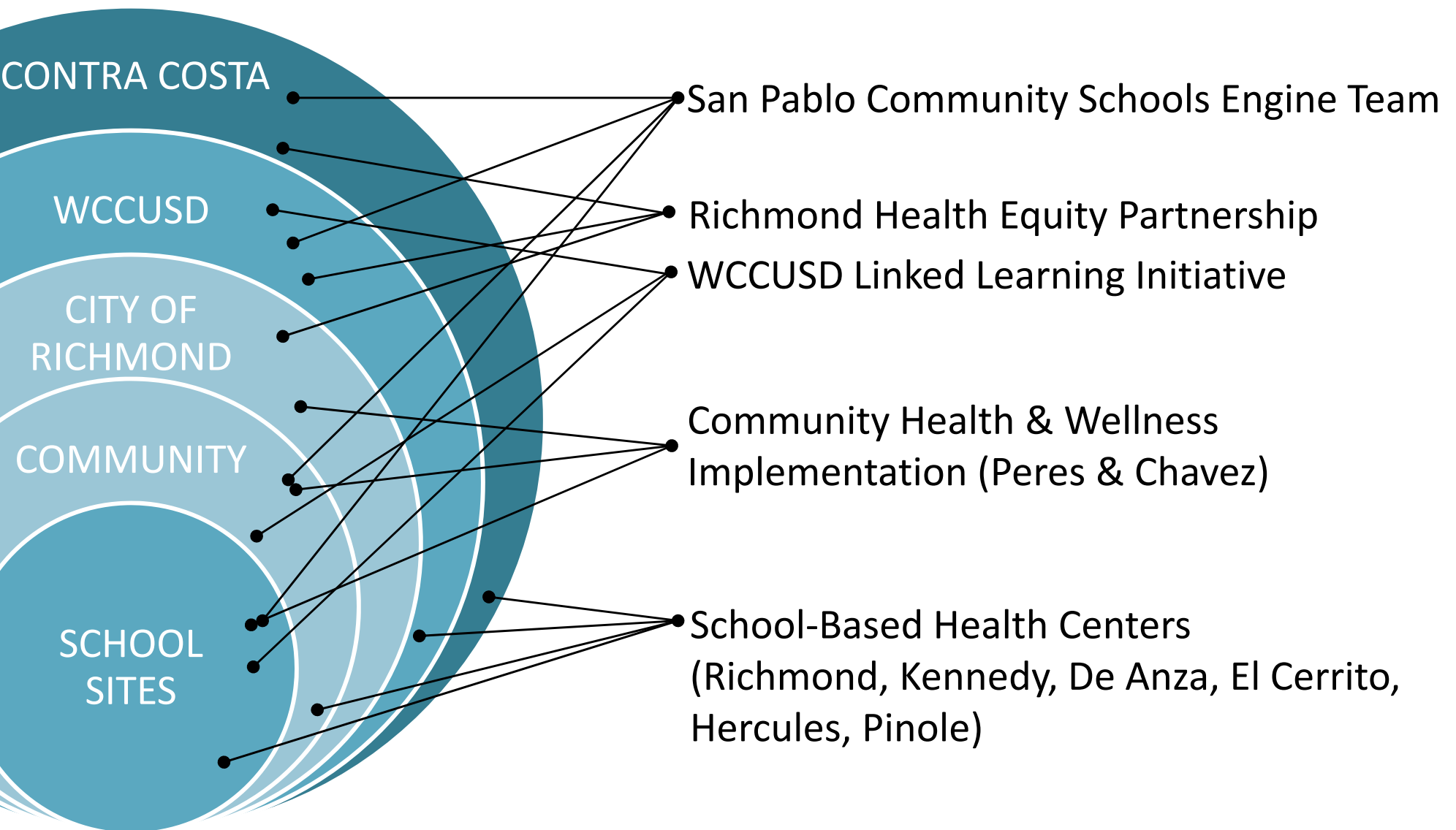
Richmond Community & School Partnerships



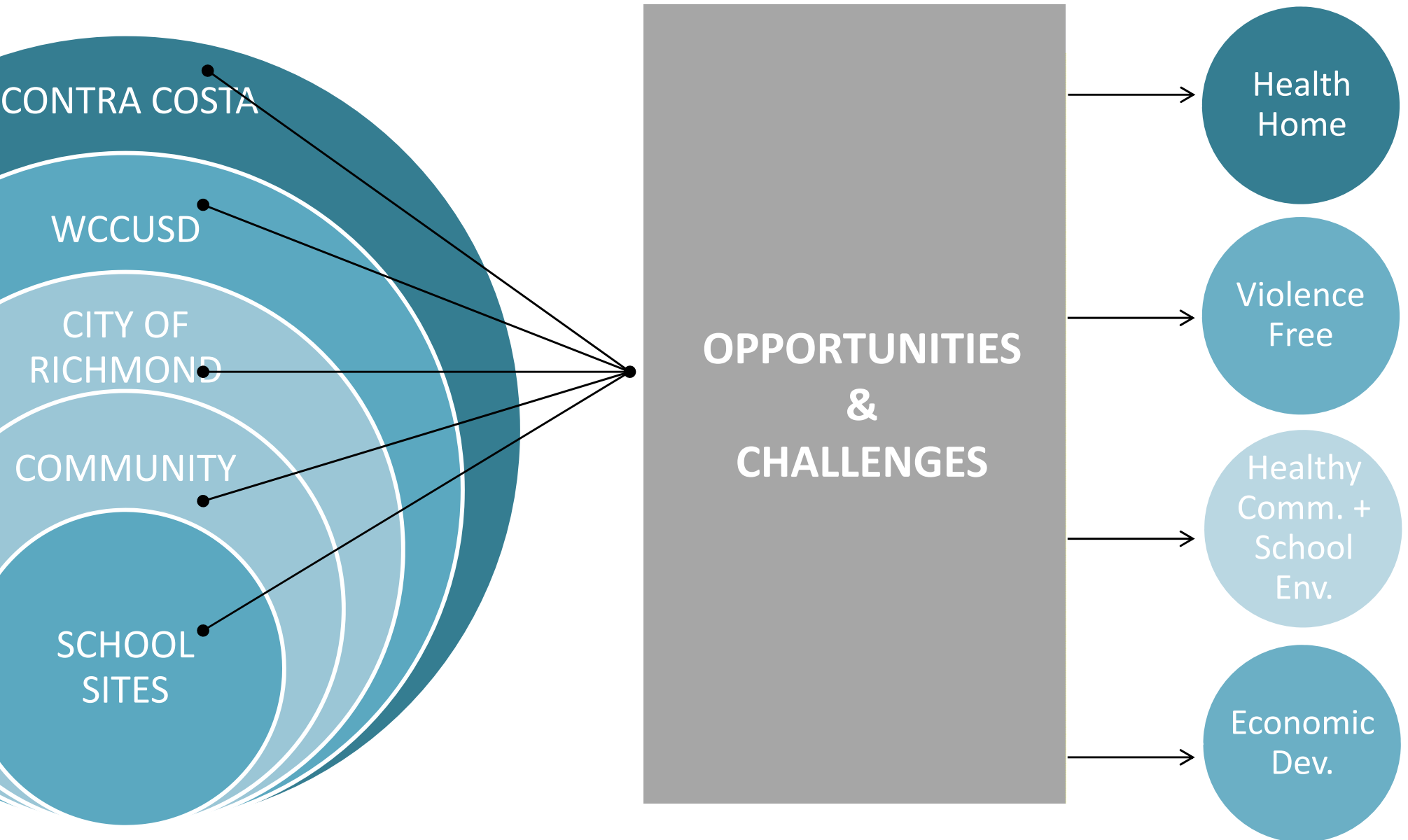
School-Based Health Centers
(Richmond, Kennedy, De Anza, El Cerrito,
Hercules, Pinole)



Richmond Community & School Partnerships



Toward an Aligned Community School Vision & Strategy



Emerging Directions

- Start with parent networks and school-based health centers as potential anchors to build out shared community school vision and strategy
- Align academic initiatives with City of Richmond's Health in All Policies approach
- Build a system of shared measurement and accountability
- Manage and support on-going cultural change process
- Engage youth in identifying assets and needs

Discussion: Exploring Next Steps

How can the Healthy Richmond Hub support community and school partnerships in a mutually reinforcing relationship to better meet the comprehensive needs of young people?

- What major opportunities and challenges does this raise for you?
- What are possible types of supportive relationships? How can we engage and where do we need to build capacity?
- What information do we need to better inform this?
- What are the priority next steps for further research?

Thank you



Photo: Fed. Interagency Workgroup on Environmental Justice, Nov. 2011, City of Richmond