

# Opportunity-Rich Schools & Sustainable Communities: Seven Steps to Align High-Quality Education with Innovations in City and Metropolitan Planning and Development

December 1, 2011



# Goals

- Share best practices framework
- Learn from local partners
- Hear your questions & insights



# Agenda

**SALIN GEEVARGHESE**, Senior Advisor, Office of Sustainable Housing and Communities, HUD

**DEBORAH MCKOY** and **JEFF VINCENT**, CC&S

**TONY SMITH**, Superintendent, Oakland Unified School District

**MIKE RAIBLE**, Executive Director, Planning and Development, Charlotte-Mecklenburg Schools

**JONATHAN WELLS**, Program Manager, Capital Facilities, Charlotte-Mecklenburg Planning Department

**MARISA RAYA**, Regional Planner, Association of Bay Area Governments

*If you can't hear, dial via phone: 1.888.224.3715*

# *Role of Education in HUD Programs*



**SALIN GEEVARGHESE**, Senior Advisor,  
Office of Sustainable Housing and  
Communities, U.S. Dept. of Housing  
and Urban Development

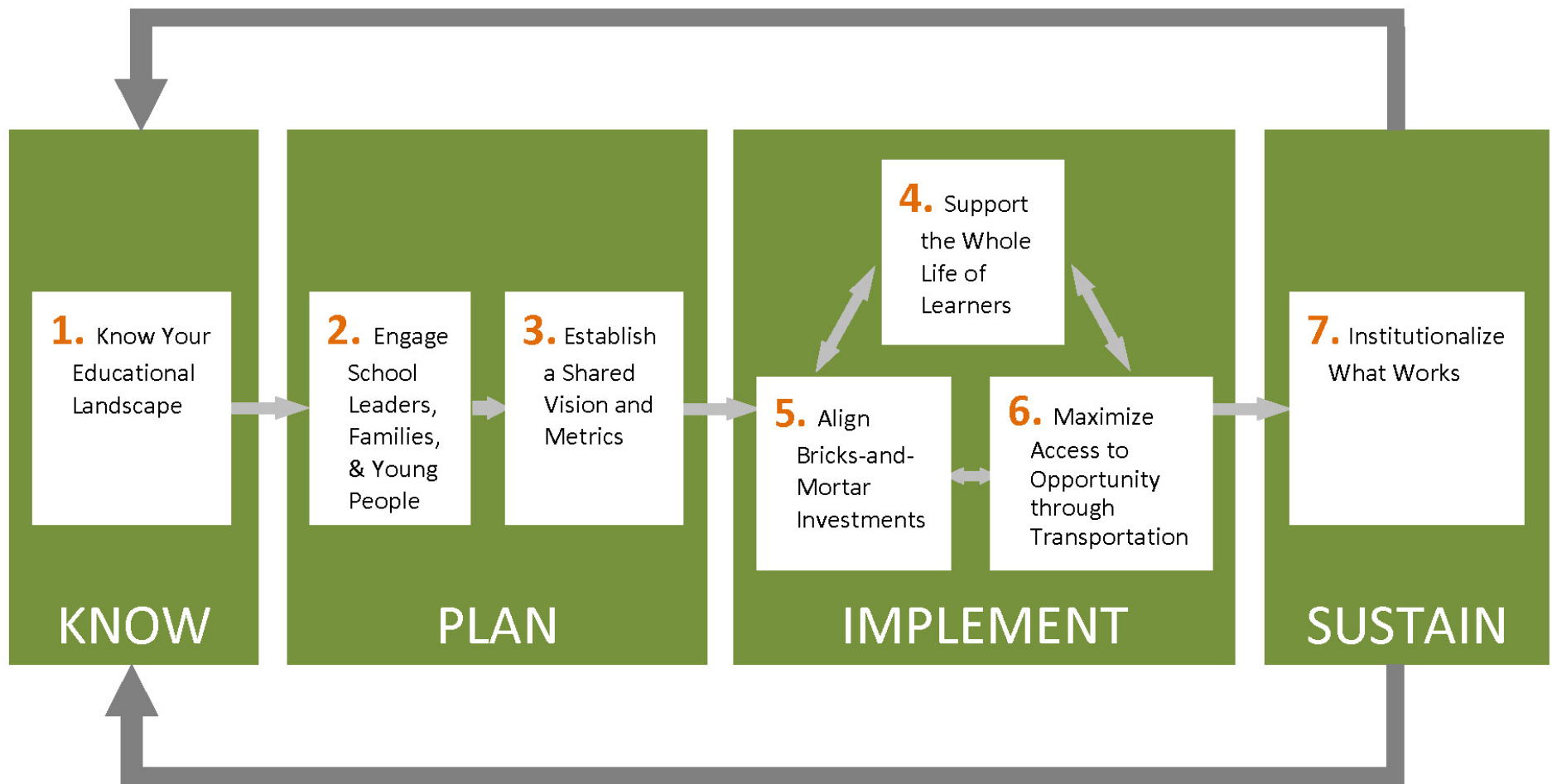
Office of Sustainable Housing and Communities

[http://portal.hud.gov/hudportal/HUD?src=/program\\_offices/sustainable\\_housing\\_communities](http://portal.hud.gov/hudportal/HUD?src=/program_offices/sustainable_housing_communities)

Partnership for Sustainable Communities

<http://www.sustainablecommunities.gov/>

# Seven Steps to Align High-Quality Education with Innovations in City and Metropolitan Planning and Development



1

KNOW

PLAN

IMPLEMENT

SUSTAIN

# Get to Know Your Educational Landscape

- *Understand* local educational policies and demographics
- *Inventory* educational and workforce assets
- Assess physical school infrastructure



KNOW

2

PLAN

IMPLEMENT

SUSTAIN

## Engage School Leaders, Families and Young People in Planning

- *Identify* ways to engage in the planning process
- *Engage* students and parents
- *Connect* participation to classroom learning
- *Ensure* engagement with capacity building tools

KNOW

3

PLAN

IMPLEMENT

SUSTAIN

## Create a Shared Vision Linking Community, Regional, and Educational Prosperity

- *Cultivate* leadership and champions
- *Adopt* the vision statement formally across institutions
- *Develop* common indicators to measure change, shared accountability, and effective use of scarce resources



**4.** Support  
the Whole  
Life of  
Learners

**5.** Align  
Bricks-and-  
Mortar  
Investments

**6.** Maximize  
Access to  
Opportunity  
through  
Transportation

IMPLEMENT

KNOW

PLAN

4

IMPLEMENT

SUSTAIN

# Support the Whole Life of Learners through Comprehensive Services and Amenities

- *Provide* comprehensive social services aligned with educational priorities
- *Provide* quality amenities to attract families and enrich students
- *Harness* public and private funding to align programs

KNOW

PLAN

5

IMPLEMENT

SUSTAIN

## Align Bricks and Mortar Investments

- *Establish* schools as centers of opportunity-rich communities
- *Ensure* family-oriented, mixed-income housing
- *Pursue* joint development

KNOW

PLAN

6

IMPLEMENT

SUSTAIN

# Maximize Opportunity through Affordable Transportation Options

- *Make* areas surrounding schools pedestrian/bicycle safe
- *Align* transit options to support school choice and extracurricular opportunities
- *Create* incentives for multimodal transportation choices by students
- *Site* schools to maximize multimodal transportation access

KNOW

PLAN

IMPLEMENT

7

SUSTAIN

# Institutionalize What Works to Secure Gains and Ensure Ongoing Innovation

- *Support* capacity building for new professional practice, formal communication systems, and collaborative decision-making
- *Measure* change, assess impact, and leverage results
- *Leverage* diverse resources
- *Balance* “what works” with “what could be”

# *Getting Districts to the Table*

TONY SMITH, Superintendent



OAKLAND UNIFIED  
SCHOOL DISTRICT

*Community Schools,  
Thriving Students*

<http://www.ousd.k12.ca.us>

<http://www.thrivingstudents.org/>

# *Effective Joint Use Strategies*



MIKE RAIBLE, Executive Director,  
Planning and Development,  
Charlotte-Mecklenburg Schools



JONATHAN WELLS, Program  
Manager, Capital Facilities,  
Charlotte-Mecklenburg Planning  
Department



# Joint Use Task Force: what & why?

- Created 1994 by Joint Resolution
- Mechanism for joint use and capital collaboration discussions to occur at staff level
- Meets monthly; 2 dozen agencies involved (City, County, Towns, NFPs)

## Purpose:

- Seek collaborative facilities opportunities to:
  - reduce development & operational costs
  - create superior product for community
- Better align projects in capital plans & facilities needs assessments
- I.D. potential public re-use of public properties
- Single source for “all things capital”

# Joint Use Task Force: Partnerships

## Created mutual process expectations

- for Schools' role in:
  - City re-zoning process
  - City planning initiatives (land use & policy)
- for Planning's role in Schools' facility master plan updates
- for Schools' role in City CIP and Planning's role in County CIP

## Creates opportunities for “path forward” collaboration:

- City and County capital budgeting re-design
- “Project Lift”
- Neighborhood Quality of Life

# Joint Use Task Force: challenges

- Information-sharing – use of technology
- Simple geographic alignment of large amounts of facilities data
- Expectation of “better” collaboration & planning with fewer resources
- Competing priorities between/among partners (including timing)
- Real “meaningful” collaboration (it’s still voluntary)
- “Cultural” differences

More info: <http://charmeck.org/city/charlotte/planning/CapitalFacilities/Pages/JointUseTaskForce.aspx>



# Plan BayArea

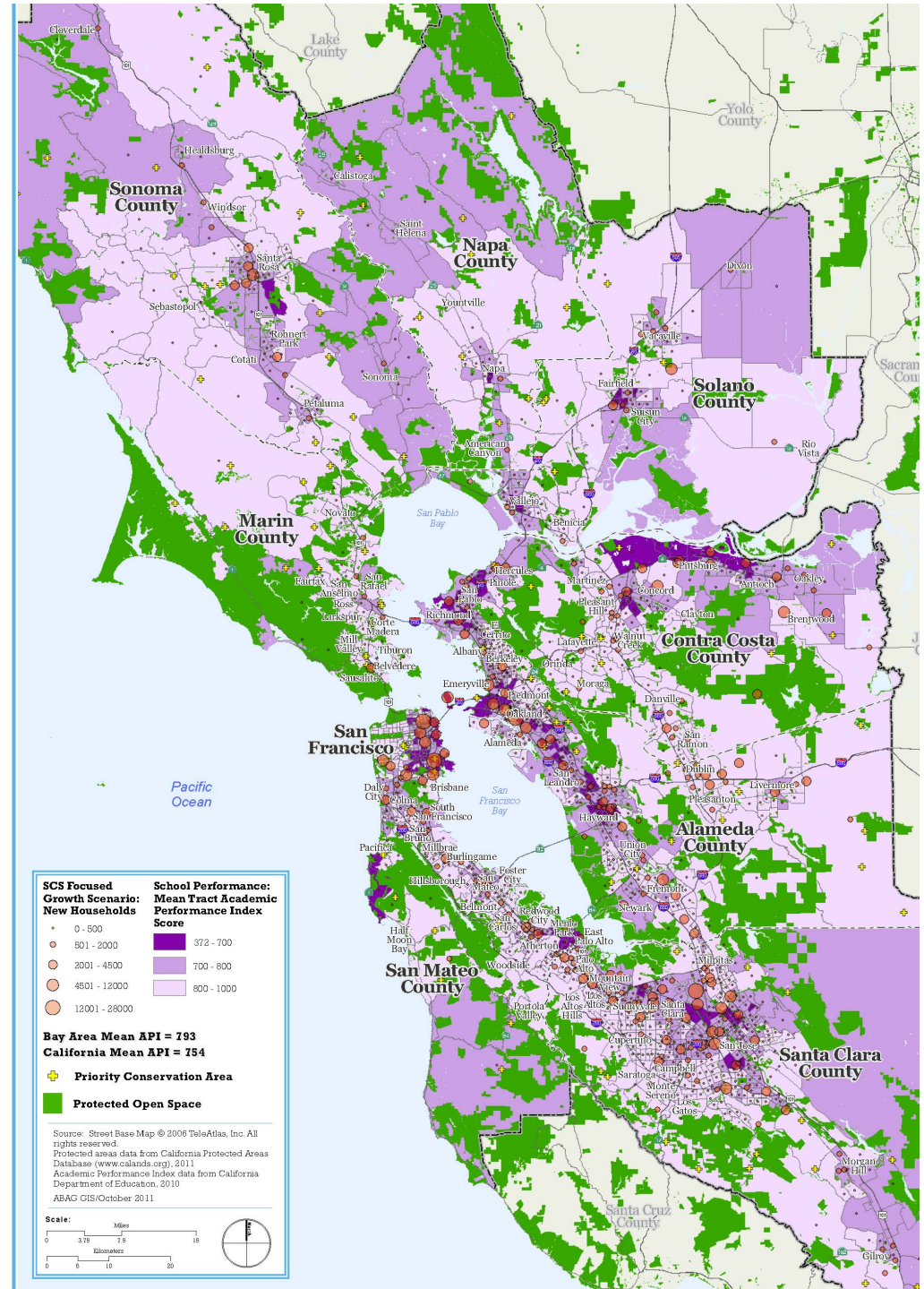
## Regional Planning for a Sustainable Bay Area: the Role of Schools

Marisa Raya, Regional Planner,  
Association of Bay Area Governments  
Oakland, CA

# Plan Bay Area

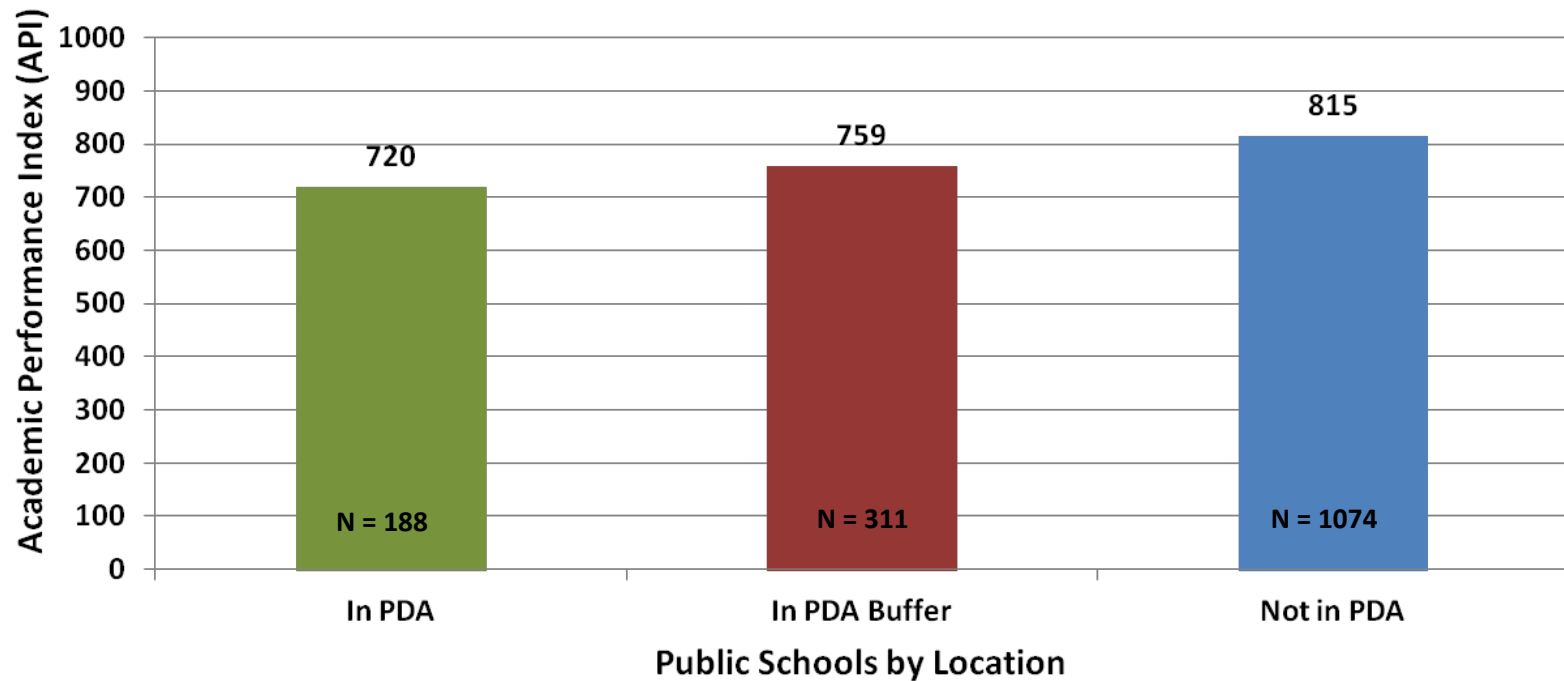
## ~70% of Growth to Priority Development Areas (PDAs)

- Focus funding and resources on these area
- PDA Diversity
- Infill Planning Model = Complete Community



# PDA Schools Have Lower Academic Scores

Bay Area Schools  
Mean Academic Performance Index (API)  
2009-10



9-County Bay Area Mean API 2009-10 = 793

State Goal: 800

California Mean API 2009-10 = 754

# From Region to School

- Past Work Established:
  - 1) Regional Planning is built on supporting Sustainable Neighborhoods, or “Complete Communities”
  - 2) Schools are a critical element for future housing and job projections; 12% of all transportation trips
- Region can’t address everything: Target resources to PDAs, including schools in key PDAs
- Region and State should provide planning frameworks and incentives built around supporting schools in targeted areas
  - Planning program (~\$3M/year, or about 10 local plans)
  - Capital Funding
- Looking for Pilot Projects in Key Districts: next Planning Grant round early 2012





# Plan Bay Area Links

<http://www.bayareavision.org/schools>

[http://www.onebayarea.org/plan\\_bay\\_area](http://www.onebayarea.org/plan_bay_area)

[http://www.bayareavision.org/initiatives/  
planninggrants.html](http://www.bayareavision.org/initiatives/planninggrants.html)

Next round of grants, available Winter/Spring 2012



# Thank you!

Salin Geevarghese

[Salin.G.Geevarghese@hud.gov](mailto:Salin.G.Geevarghese@hud.gov)

Tony Smith

[tony.smith@ousd.k12.ca.us](mailto:tony.smith@ousd.k12.ca.us)

Mike Raible

[m.raible@cms.k12.nc.us](mailto:m.raible@cms.k12.nc.us)

Jonathan Wells

[jwells@ci.charlotte.nc.us](mailto:jwells@ci.charlotte.nc.us)

Marisa Raya

[MarisaR@abag.ca.gov](mailto:MarisaR@abag.ca.gov)

Deborah McKoy

[debmckoy@berkeley.edu](mailto:debmckoy@berkeley.edu)

Jeff Vincent

[jvincent@berkeley.edu](mailto:jvincent@berkeley.edu)

# Next Steps

- Webinar series
- Profile innovative practice
- ?



<http://citiesandschools.berkeley.edu>